

Welcome to the  
town of Painswick

**QUEEN** *of the* **COTSWOLDS**



[Click here to enter](#)

# Welcome to the town of Painswick **QUEEN** *of the* **COTSWOLDS**

## *Welcome to Painswick*

**Painswick takes great delight in charming you at every turn. Sitting in regal hilltop splendour surrounded by stunning countryside, her winding streets of mellow Cotswold stone offer a glimpse into a mysterious past. This quiet country town has lived through exciting times...**

- ✿ St Mary's church tower still bears the scars of cannon fired by Royalist soldiers during the Civil War in the 17th century
- ✿ The splendid churchyard is dotted with 99 ancient yew trees – tradition says the Devil won't let the one hundredth grow
- ✿ Painswick's New Street was 'new' in 1428 – and there are plenty of tales to be told about the goings-on of yesteryear. Ask the townsfolk why 'puppy dog pie' was once the dish of the day and why some cottages needed donkey doors
- ✿ In the mid 1700s, a flamboyant garden was created in the theatrical Rococo style just outside the town to the delight of the fashionable lords and ladies of the time. Now the Rococo Garden welcomes visitors from around the world
- ✿ 18th century woollen merchants displayed their wealth by building many of the town's fine Cotswold stone houses
- ✿ The Arts and Crafts movement left its mark in the early 20th Century – present-day artisans exhibit at the town's Gloucestershire Guild of Craftsmen's Gallery

[Contents](#) [View](#) [Print](#) [Quit](#) [Zoom in](#) [Zoom out](#) [Next](#) [Back](#)



# Welcome to the town of Painswick **QUEEN** *of the* **COTSWOLDS**

## *Explore Painswick*

**Painswick is close to Stroud, Regency Cheltenham and historic Gloucester and within easy reach of Bath and Oxford. It is the perfect base from which to explore the Cotswolds.**

The town lies on the Cotswold Way, a 100-mile national walking trail which follows the Cotswold escarpment from Chipping Campden in the north to the World Heritage city of Bath in the south, making the town the perfect overnight stop.

Friendly pubs serving locally-brewed ales and fine wine, and restaurants and hotels offering great food using quality local produce, all help to make Painswick the perfect place to stay.

Whether you're looking for a luxurious boutique hotel or a bed and breakfast home-from-home to rest your walking boots, a good range of accommodation to suit all tastes and budgets is available.

Tucked away along Painswick's narrow streets are a small but select choice of mainly family-run shops and galleries, offering unexpected treasures and an opportunity to find something truly unique to mark your stay. A warm welcome awaits you from local traders...



[Contents](#) [View](#) [Print](#) [Quit](#) [Zoom in](#) [Zoom out](#) [Next](#) [Back](#)

# Welcome to the town of Painswick

## QUEEN *of the* COTSWOLDS

*Find your way around . . .*

Click on the maps for a larger, printer version



General map



Street map



Overhead view

[Contents](#) [View](#) [Print](#) [Quit](#) [Zoom in](#) [Zoom out](#) [Next](#) [Back](#)



# Welcome to the town of Painswick QUEEN *of the* COTSWOLDS

## *Painswick in Pictures*

Click on the thumbnails right to see a bigger picture of the attractions in and around Painswick



● *St Mary's churchyard*



● *Rococo Garden*



● *Painswick from afar*



● *Snowdrops at the Rococo Garden*



● *The view from Painswick Beacon*



● *Painswick in winter*



● *The quiet streets of Painswick*



● *The charming main street*

[Contents](#) [View](#) [Print](#) [Quit](#) [Zoom in](#) [Zoom out](#) [Next](#) [Back](#)

Welcome to the  
town of **Painswick**  
**QUEEN** *of the* **COTSWOLDS**



● *St Mary's churchyard*

[Go back](#)



● *St Mary's churchyard*



● *Rococo Garden*



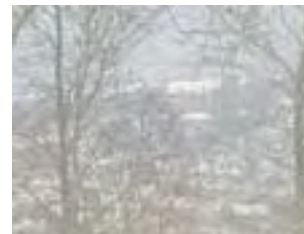
● *Painswick from afar*



● *Snowdrops at the Rococo Garden*



● *The view from Painswick Beacon*



● *Painswick in winter*



● *The quiet streets of Painswick*



● *The charming main street*

[Contents](#) [View](#) [Print](#) [Quit](#) [Zoom in](#) [Zoom out](#) [Next](#) [Back](#)

Welcome to the town of Painswick  
**QUEEN** *of the* **COTSWOLDS**



● *Rococo Garden*



● *St Mary's churchyard*



● *Rococo Garden*



● *Painswick from afar*



● *Snowdrops at the Rococo Garden*



● *The view from Painswick Beacon*



● *Painswick in winter*

[Go back](#)



● *The quiet streets of Painswick*



● *The charming main street*

[Contents](#) [View](#) [Print](#) [Quit](#) [Zoom in](#) [Zoom out](#) [Next](#) [Back](#)

Welcome to the  
town of Painswick  
**QUEEN** *of the* **COTSWOLDS**



● *A view of Painswick*

[Go back](#)



● *St Mary's churchyard*



● *Rococo Garden*



● *Painswick from afar*



● *Snowdrops at the Rococo Garden*



● *The view from Painswick Beacon*



● *Painswick in winter*



● *The quiet streets of Painswick*



● *The charming main street*

[Contents](#) [View](#) [Print](#) [Quit](#) [Zoom in](#) [Zoom out](#) [Next](#) [Back](#)

Welcome to the  
town of **Painswick**  
**QUEEN** *of the* **COTSWOLDS**



● *Snowdrops herald Spring at the Rococo Garden*

[Go back](#)

[Contents](#) [View](#) [Print](#) [Quit](#) [Zoom in](#) [Zoom out](#) [Next](#) [Back](#)



● *St Mary's churchyard*



● *Rococo Garden*



● *Painswick from afar*



● *Snowdrops at the Rococo Garden*



● *The view from Painswick Beacon*



● *Painswick in winter*



● *The quiet streets of Painswick*



● *The charming main street*

Welcome to the  
town of **Painswick**  
**QUEEN** *of the* **COTSWOLDS**



● *St Mary's churchyard*



● *Rococo Garden*



● *The view from the vantage of Painswick Beacon - on the Cotswold Way*

[Go back](#)



● *Painswick from afar*



● *Snowdrops at the Rococo Garden*



● *The view from Painswick Beacon*



● *Painswick in winter*



● *The quiet streets of Painswick*



● *The charming main street*

[Contents](#) [View](#) [Print](#) [Quit](#) [Zoom in](#) [Zoom out](#) [Next](#) [Back](#)

Welcome to the  
town of **Painswick**  
**QUEEN** *of the* **COTSWOLDS**



● *St Mary's churchyard*



● *Rococo Garden*



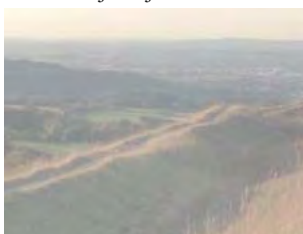
● *Painswick in winter, glimpsed from Bull's Cross*



● *Painswick from afar*



● *Snowdrops at the Rococo Garden*



● *The view from Painswick Beacon*



● *Painswick in winter*

[Go back](#)

[Contents](#) [View](#) [Print](#) [Quit](#) [Zoom in](#) [Zoom out](#) [Next](#) [Back](#)



● *The quiet streets of Painswick*



● *The charming main street*

# Welcome to the town of Painswick

## QUEEN *of the* COTSWOLDS



● *The quiet streets of Painswick*

[Go back](#)

[Contents](#) [View](#) [Print](#) [Quit](#) [Zoom in](#) [Zoom out](#) [Next](#) [Back](#)



● *St Mary's churchyard*



● *Rococo Garden*



● *Painswick from afar*



● *Snowdrops at the Rococo Garden*



● *The view from Painswick Beacon*



● *Painswick in winter*



● *The quiet streets of Painswick*



● *The charming main street*

Welcome to the town of Painswick  
**QUEEN** *of the* **COTSWOLDS**



● *The charming main street*

[Go back](#)

[Contents](#) [View](#) [Print](#) [Quit](#) [Zoom in](#) [Zoom out](#) [Next](#) [Back](#)



● *St Mary's churchyard*



● *Rococo Garden*



● *Painswick from afar*



● *Snowdrops at the Rococo Garden*



● *The view from Painswick Beacon*



● *Painswick in winter*



● *The quiet streets of Painswick*



● *The charming main street*



# Welcome to the town of Painswick **QUEEN** *of the* **COTSWOLDS**

## *What's on in Painswick*

Painswick is a popular venue for arts and crafts exhibitions throughout the year. The local area hosts a number of festivals including Stroudwater International Textile Festival, Visual Arts Festival, Stroud Fringe Festival and Stroud Walking Festival. The calendar below gives you just a flavour of what attractions are available throughout the year.

### **JANUARY & FEBRUARY**

- Snowdrops at the Rococo Garden [www.rococogarden.org.uk](http://www.rococogarden.org.uk)

### **APRIL**

- Good Friday Easter Egg Hunt, Rococo Garden

### **JULY**

- Companion Dog Show

### **AUGUST**

- Gloucestershire Guild of Craftsmen summer exhibition [www.guildcrafts.org.uk](http://www.guildcrafts.org.uk)

### **SEPTEMBER**

- Clipping (or 'clypping') ceremony when Painswick folk join hands around St Mary's Church

### **DECEMBER**

- Gloucestershire Guild of Craftsmen Christmas Exhibition [www.guildcrafts.org.uk](http://www.guildcrafts.org.uk)

**This list is meant as a guide only. Always check the events before travelling**

Tourist Information centre: T: +44 (0)1453 760 960

E: [tic@stroud.gov.uk](mailto:tic@stroud.gov.uk)

W: [www.visitthecotswolds.org.uk](http://www.visitthecotswolds.org.uk)



# Welcome to the town of Painswick **QUEEN** *of the* **COTSWOLDS**

*Find out more . . .*

## **Stroud Tourist Information Centre**

Subscription Rooms, George Street, Stroud,  
Gloucestershire, GL5 1AE

Open: Monday – Saturday 10am – 5pm

T: +44 (0)1453 760 960

E: [tic@stroud.gov.uk](mailto:tic@stroud.gov.uk)

W: [www.visitthecotswolds.org.uk](http://www.visitthecotswolds.org.uk)

## **Painswick Parish Council**

W: [www.painswick-pc.gov.uk](http://www.painswick-pc.gov.uk)

## **Painswick Local History Society**

W: [www.painswickhistory.org.uk](http://www.painswickhistory.org.uk)



[www.southwestrda.org.uk](http://www.southwestrda.org.uk)

**Photography by**

**Published by**  
**Written and developed by**  
**Designed by**

Alexander Caminada [www.caminada.co.uk](http://www.caminada.co.uk) Stroud District Council; Cotswold Tourism; Nick Turner; Jo Ward; Richard Dainton  
Gloucestershire First March 2008 [www.glosfirst.co.uk](http://www.glosfirst.co.uk)  
[www.viva-communications.co.uk](http://www.viva-communications.co.uk)  
The Design Co-operative [www.thedesigncoop.co.uk](http://www.thedesigncoop.co.uk)

## **TRAVEL INFORMATION**

### **Train, bus and coach**

National traveline

T: 0871 200 2233 W: [www.traveline.org.uk](http://www.traveline.org.uk)

### **By car**

Painswick lies on the A46 within easy reach of the M5 and M4 motorways. Click on Contents below to find and print maps.

### **On foot**

Painswick is on the Cotswold Way – a National Trail of just over 100 miles along the Cotswolds escarpment.

W: [www.nationaltrail.co.uk/Cotswold](http://www.nationaltrail.co.uk/Cotswold)



**Contents View Print Quit Zoom in Zoom out Next Back**

Welcome to the town of **Painswick**

**QUEEN** of the **COTSWOLDS**



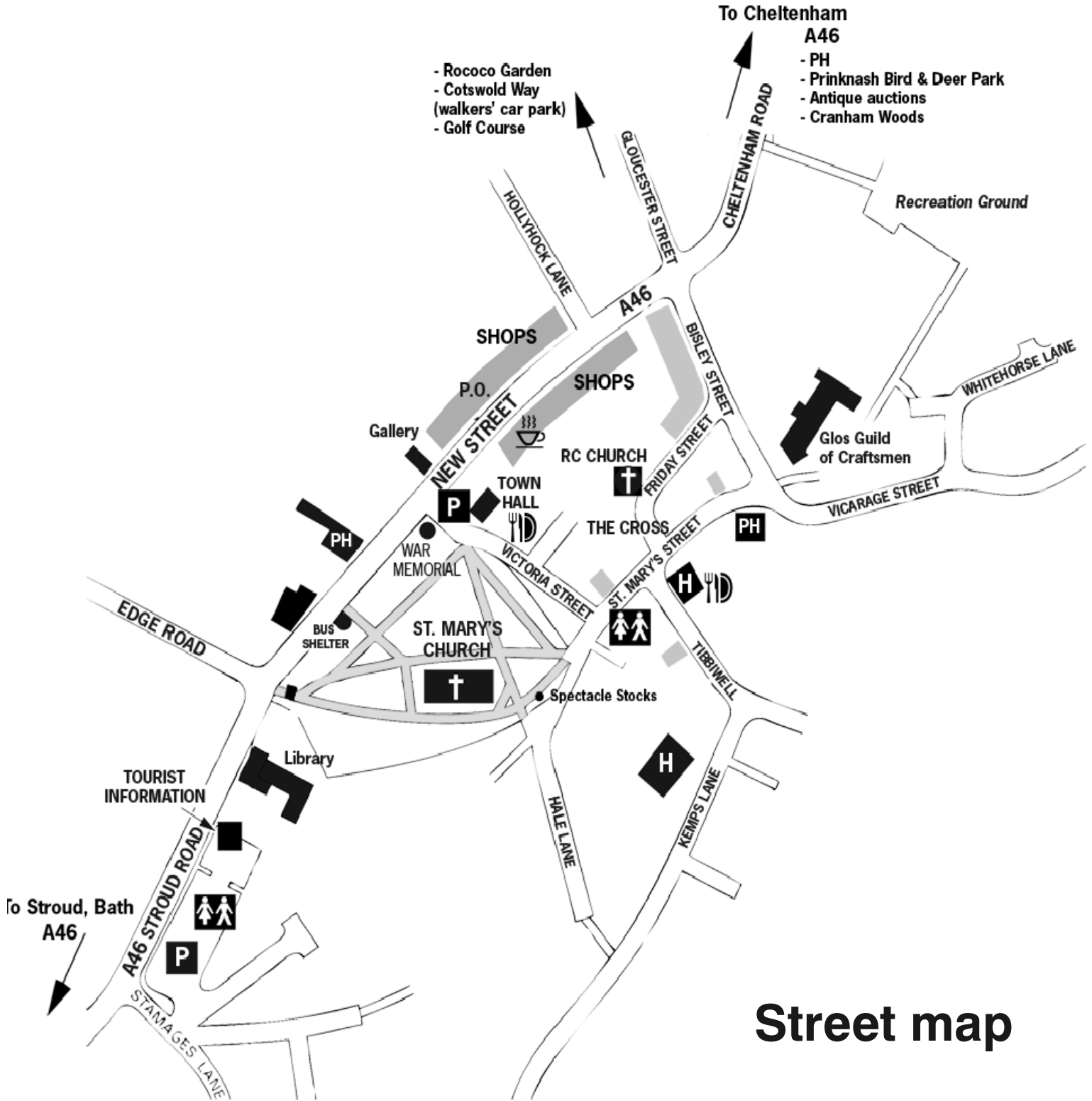
**General map**

[Print this page](#)

[Go back](#)

Welcome to the town of **Painswick**

# QUEEN of the COTSWOLDS



**Street map**

[Print this page](#)

[Go back](#)

Welcome to the  
town of **Painswick**

**QUEEN** *of the* **COTSWOLDS**



**Overhead view**

[Print this page](#)

[Go back](#)